



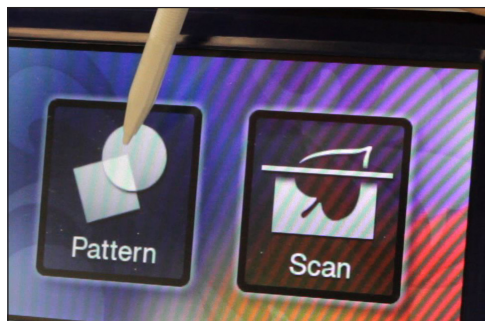
Julie Fei-Fan Balzer

We've all got a deck of cards missing a card or two. Instead of trashing those playing cards, turn them into unique place cards! These Playing Card Place Cards are perfect for your next dinner party or poker night!

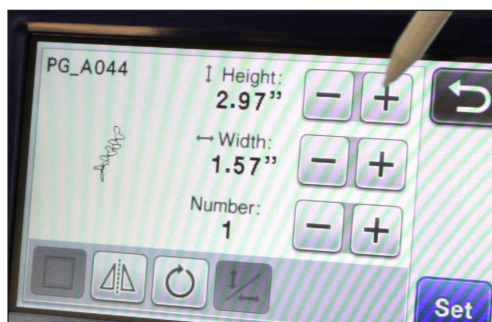
MATERIALS:

Brother ScanNCut2 Machine, Playing Cards, Home Deco USB (#CAUSB3), Standard Mat, Standard Blade/Holder, Cardstock, Adhesive

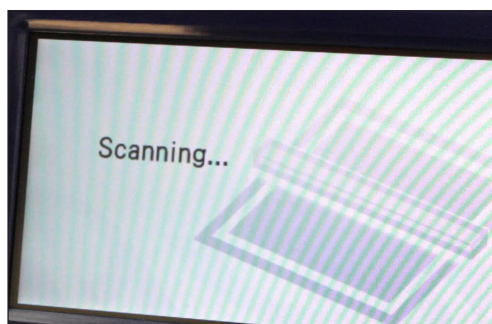
step 1. Choose the design you'd like to use. (I'm using patterns from the "Brother USB 3: Home Deco Pattern Collection.") Go to: "Pattern" > "Saved Data" > "USB" > (the pattern of your choice).



step 2. Resize your cutting image to fit onto a playing card. Mine are 2.25" x 3.5".

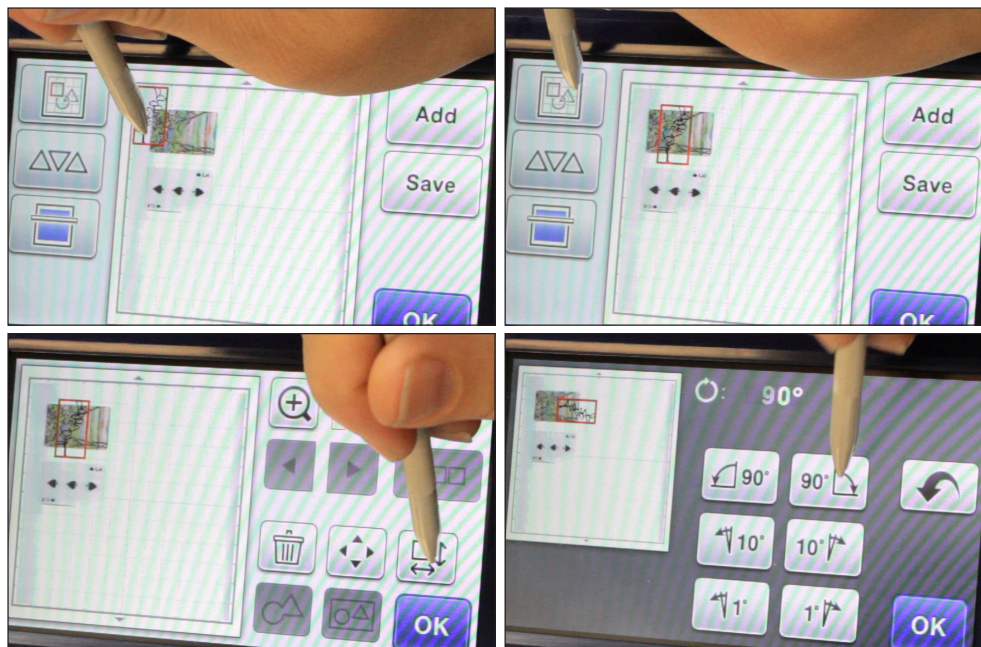


step 3. Use the "Scan" button to scan in your playing card(s) so that you can perfectly place your cut images onto the playing card(s).

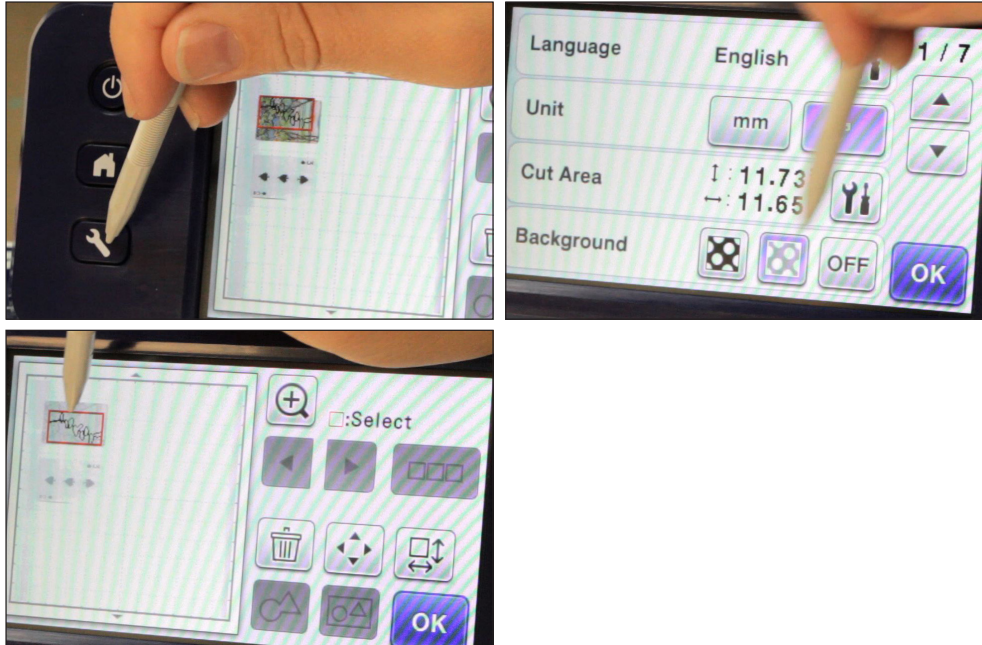


Tip: If the scan is too dark for you to see clearly, you can lighten it in the settings ("Wrench" button).

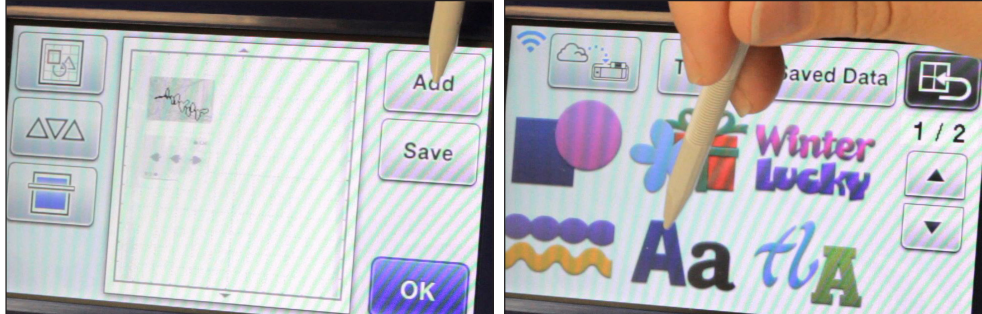
step 4. Drag your cutting image onto your playing card and, if necessary, rotate your cutting image so that it fits on the card.



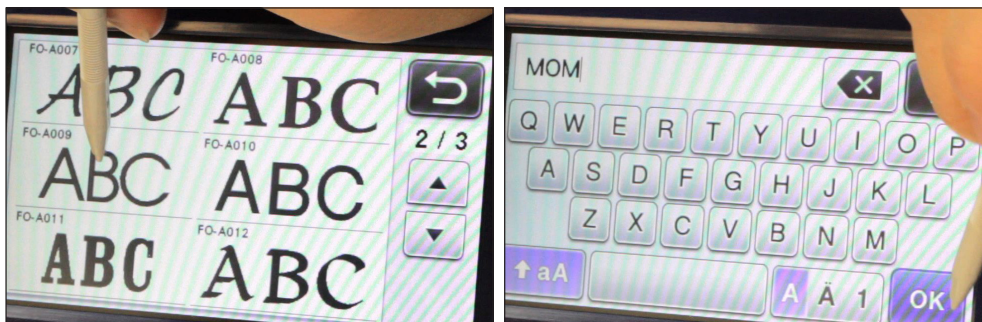
step 4. Continued...



step 5. Click the "Add" icon and navigate to the built-in fonts.



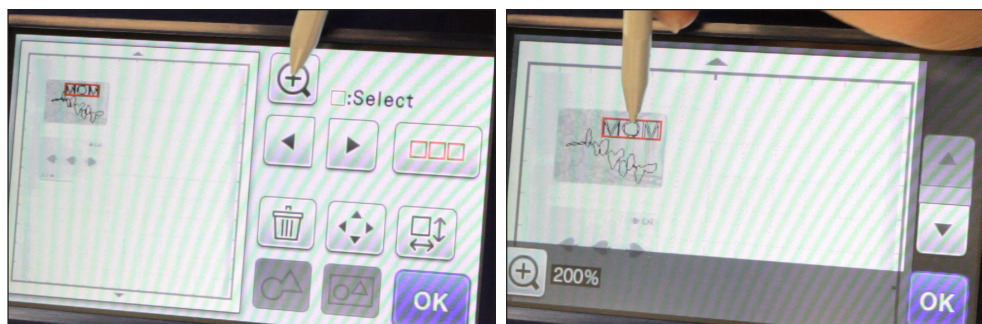
step 6. Choose the font you'd like to use and type the name of the person the place card is for.



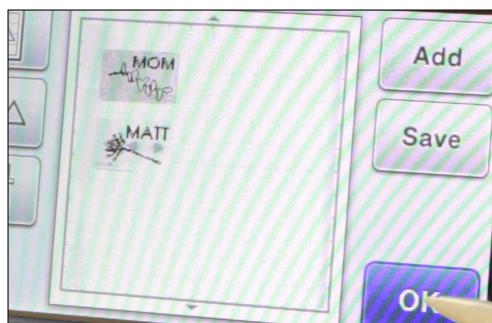
step 7. Drag the name onto the playing card so that it fits with the cutting image you previously chose. Use the editing functions to resize the name so that it fits onto your playing card.



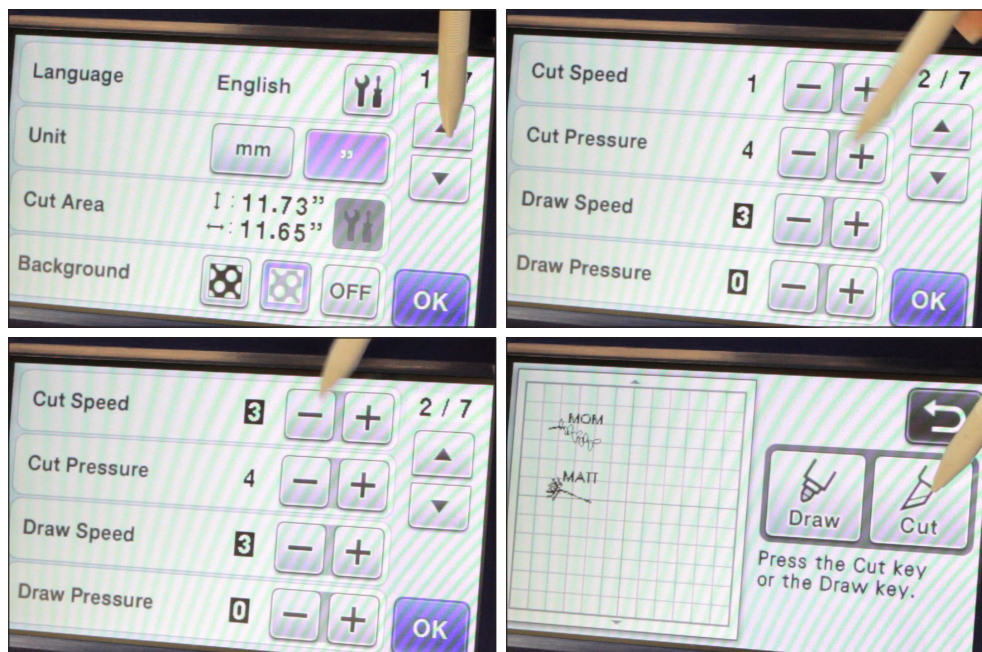
Tip: Zoom in to more easily see all the details.



step 8. If you want to decorate additional playing cards, use the “Add” icon to add additional cutting images and names, following step ranges 1-2 and 4-7, until all the cards are ready to cut!



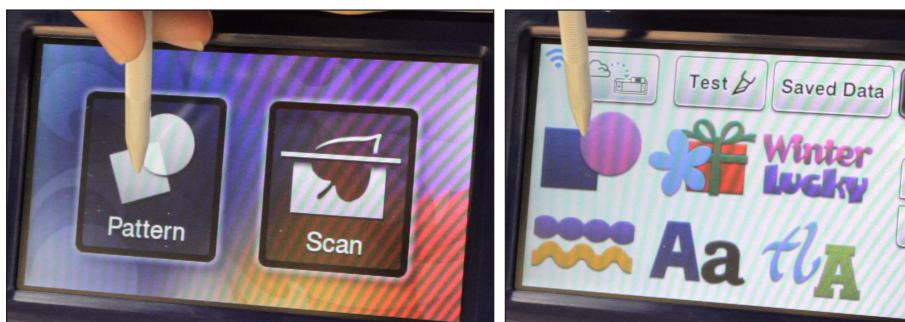
step 9. Before you cut, adjust the “Cut Pressure” and “Cut Speed” of your blade. (I tested my playing cards and found that they cut best, for me, at – Blade: 10; Speed: 3; Pressure: 4.) Whatever settings you choose, be sure to do a test cut for your machine, your blade, and the playing cards.



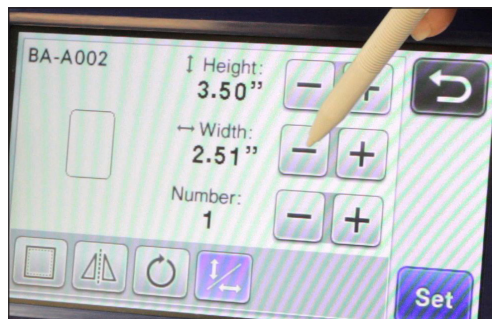
step 10. Cut your playing cards.



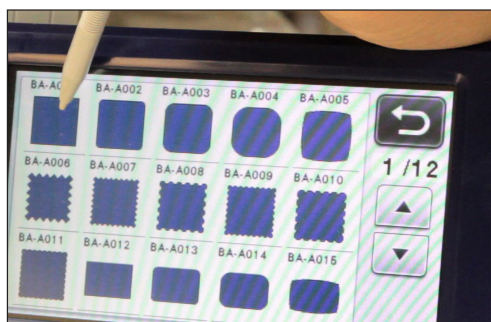
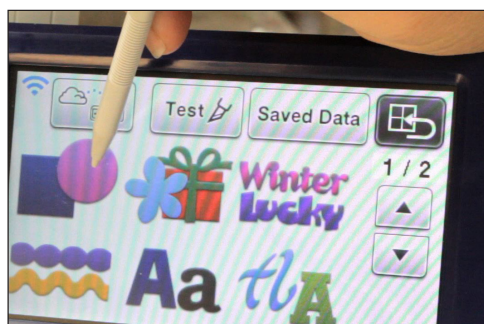
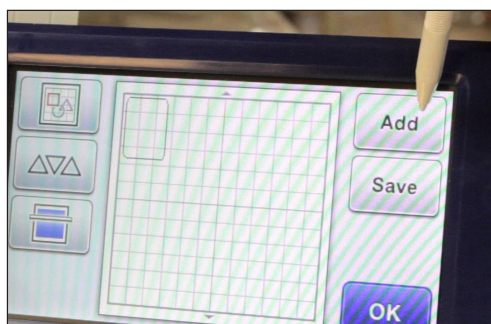
step 11. Now we need to build the back of the place cards. Begin by choosing “Pattern” > “General Shapes” > “Rounded Square (BA-A002).”



step 12. Hit the “Aspect Ratio” icon so that you can independently adjust the height and width of the square. We want to turn it into a rectangle that is about the same size as a playing card.



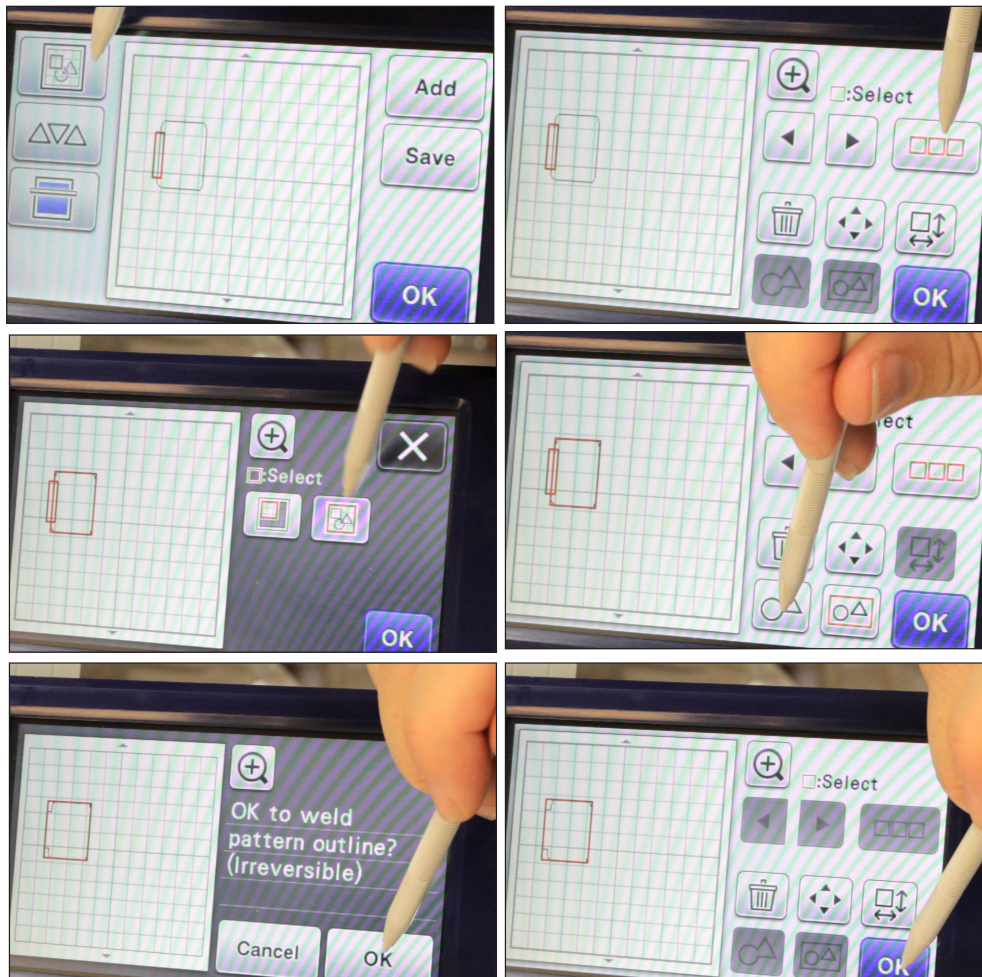
step 13. Once you’ve set that piece, choose the “Add” icon and navigate to the “Basic Shapes” and choose the “Basic Square (BA-A001).”



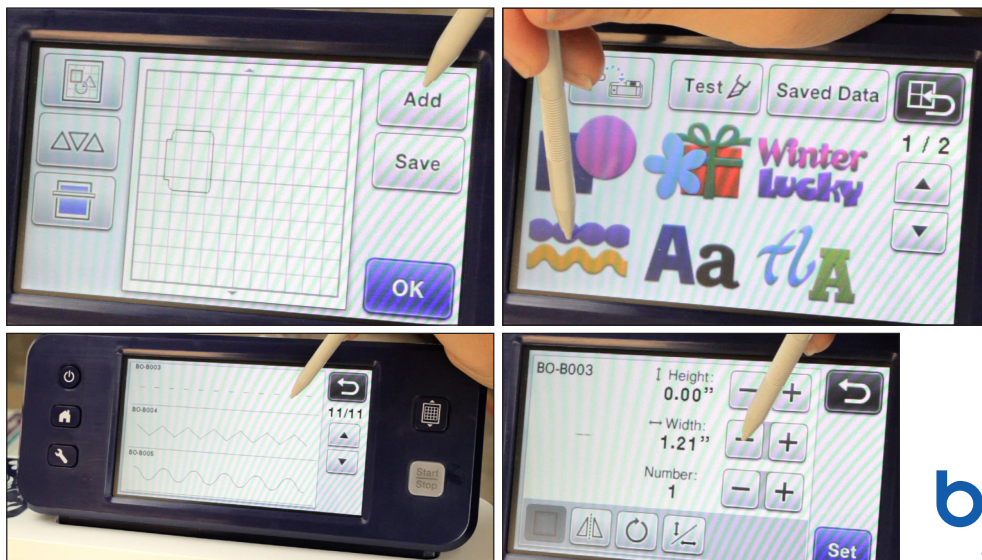
step 14. Hit the “Aspect Ratio” button and create a small strip. (Mine is approximately 2.31" x .43".)



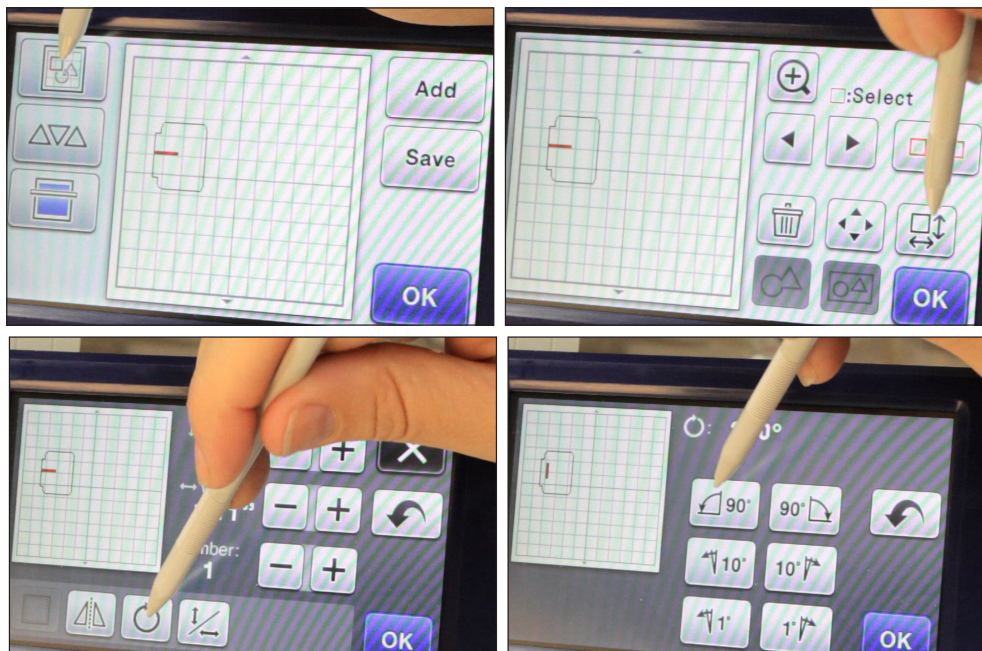
step 15. Overlap the two pieces slightly (zoom in if necessary to do this), “Select All,” and then weld the two pieces.



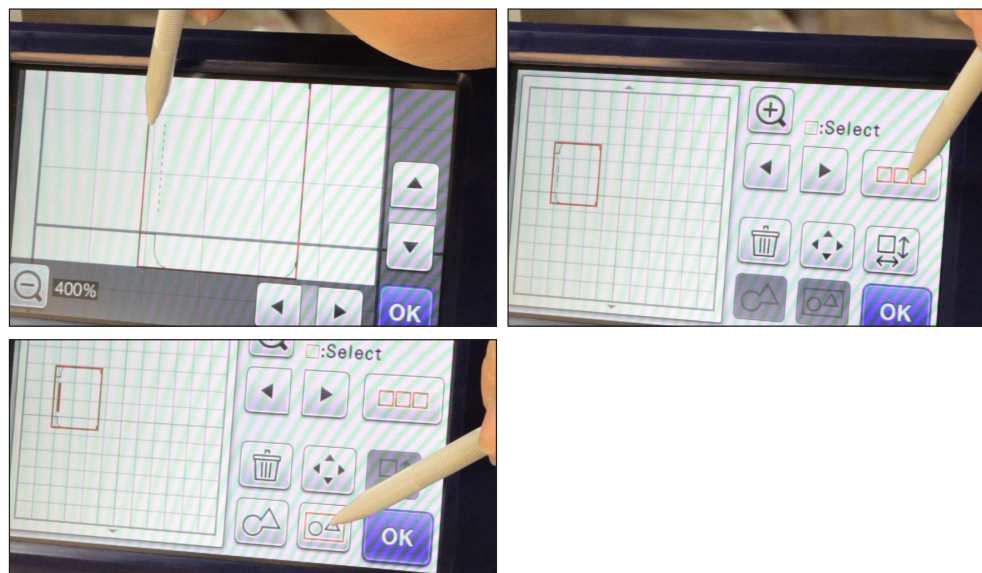
step 16. Click the “Add” icon and navigate to the borders. On page 11 you will find a perforation line (BO-B003). Make it about the same size as your small strip.



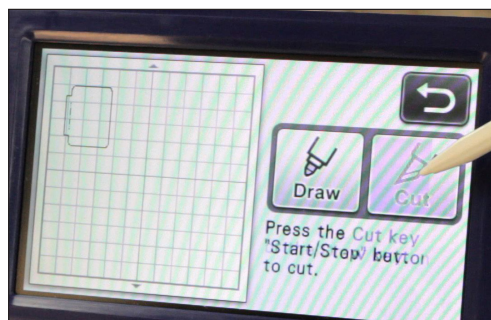
step 17. Drag the perforation line onto your welded piece so that it sits on the line where the two pieces were welded. If necessary, rotate the perforation line.



step 18. "Select All" > "Group".

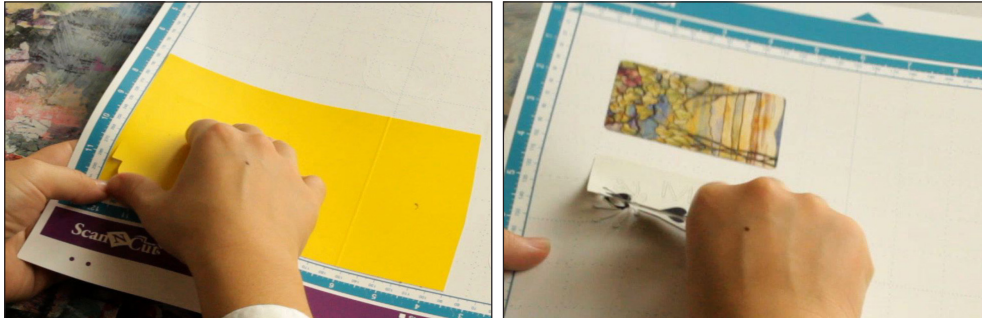


step 19. Now that you've created the back of your place card, you can cut 1 or 100 of them.



Tip: Be sure to adjust your blade, "Pressure," and "Speed" for the card stock.

step 20. To begin the assembling of your custom “Playing Card Place Cards,” remove all of the cuts from the mats.



step 21. Fold the back piece along the perforation line.



step 22. Apply dry adhesive to the small strip of the back piece. Glue the cut playing card onto this strip.



That's it! Your “Playing Card Place Cards” are ready to use!